

'04

2004. 6

KOTRA

I.

1.

- 2004 5
6,623

● KOTRA
動的

- 4,580 70%

- 가 가 43.61%가
가

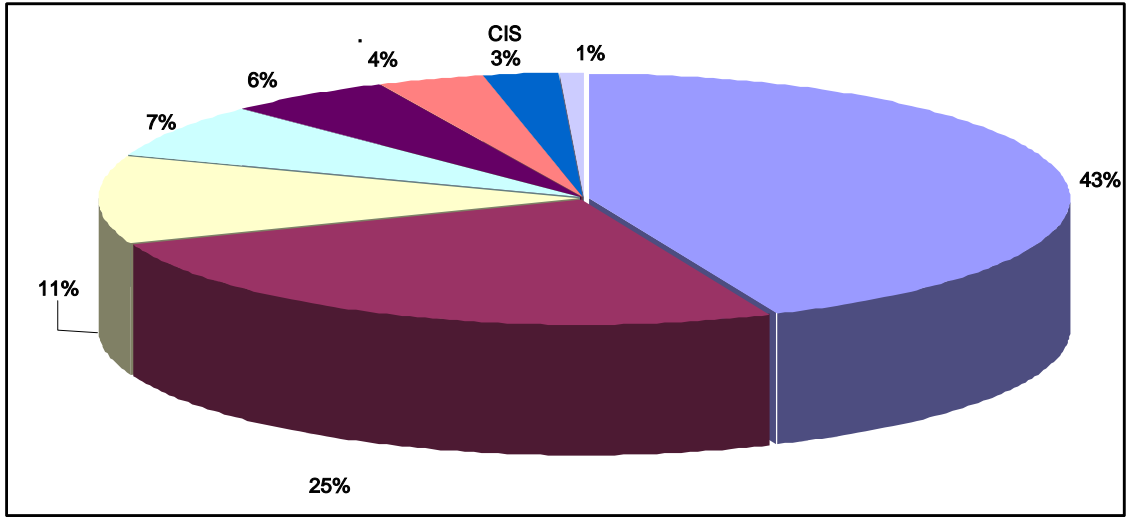
- (11.29%), (7.11%)

< >

(KOTRA)		(%)
()	1,692	25.55
	53	0.8
	748	11.29
	471	7.11
	369	5.57
	2,888	43.61
CIS	166	2.51
.	236	3.56
	6,623	100%

<

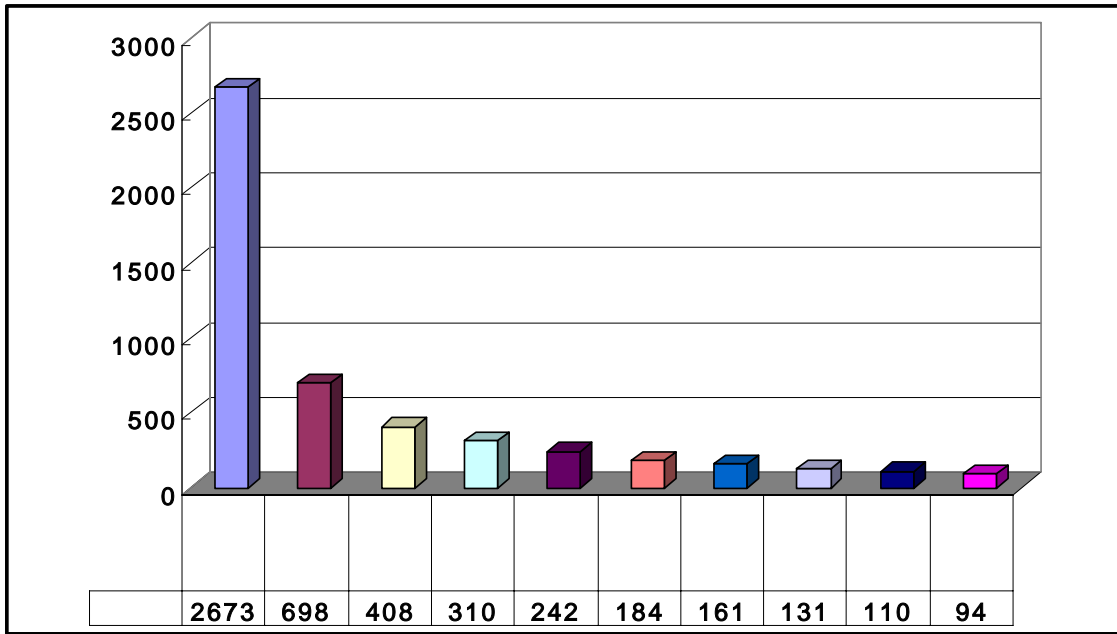
>



2.

- , 698 가 '02
2 ,
3, 4 .
- , 90
가 가 ,
가 가 .

< 10 가 >



3.

- 86 가 가 87

- 86 가 87

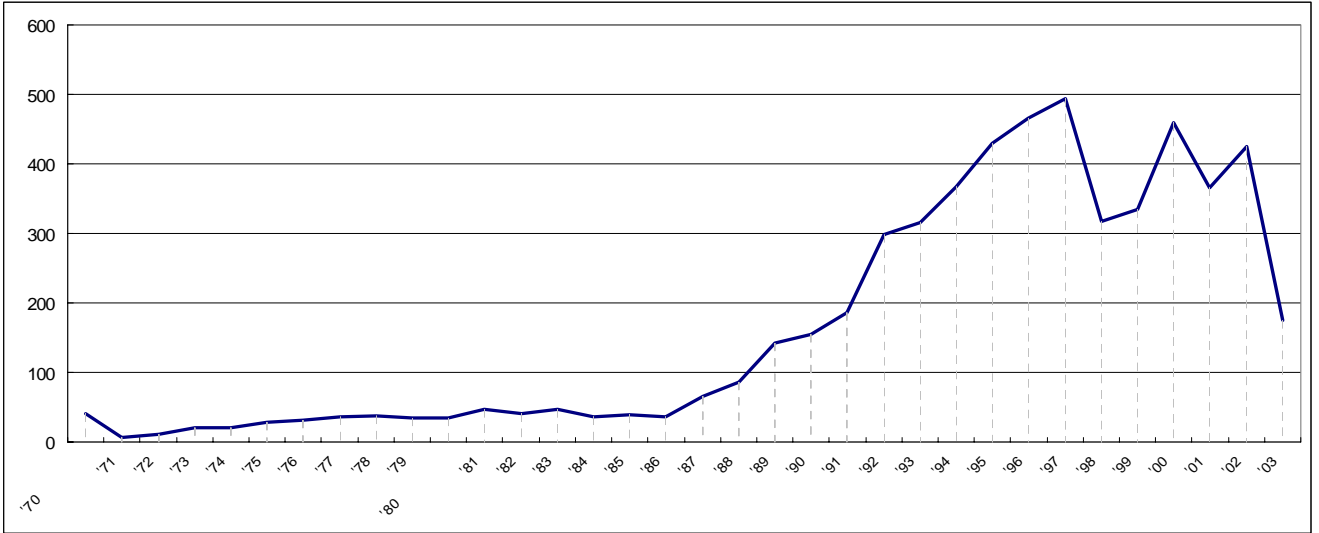
- 97 494 ,
98 36% 317

- 2000
350 450

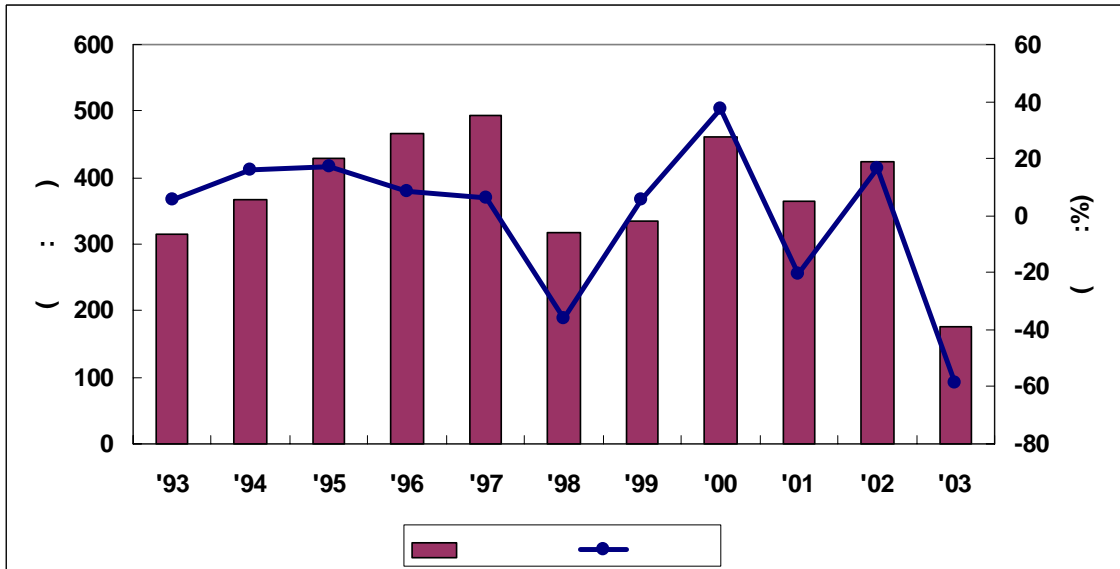
- 03 가 176 ,

- 03 가
 2,855 ,03
 450 .

< >



< 10 >

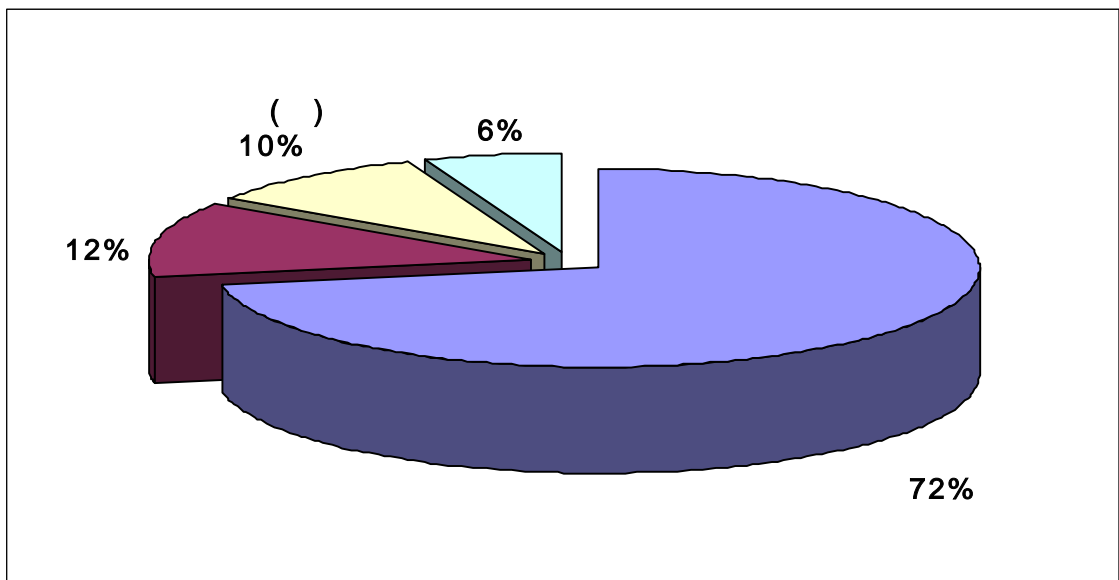


II.

1.

- 4,543 가 , 72% (12%), () (10%) .
- , 6% , , .

< >

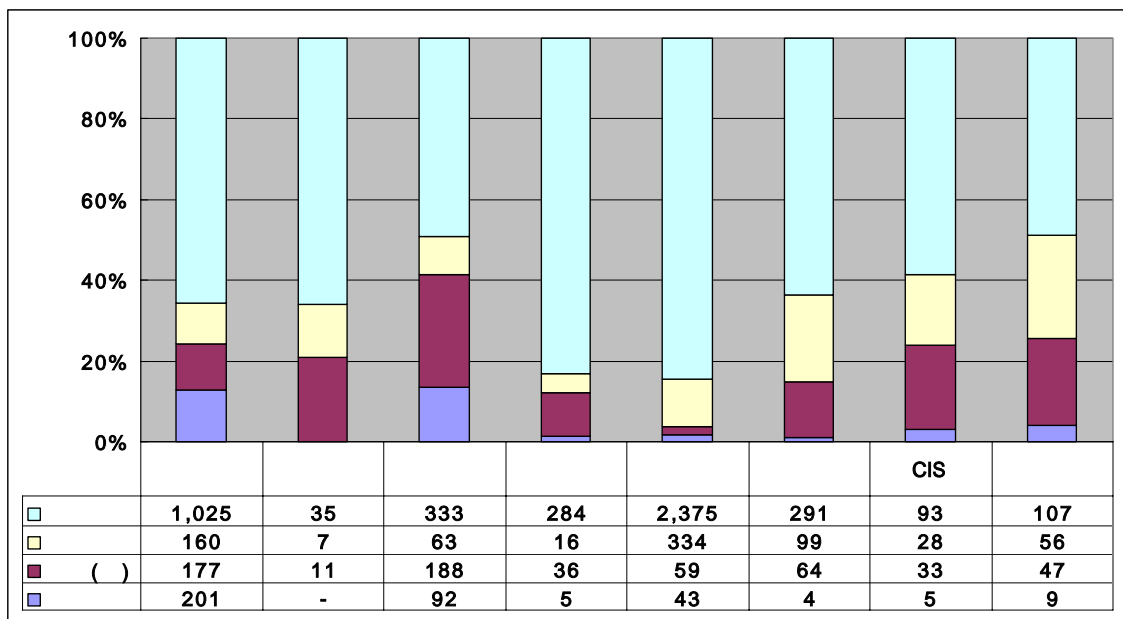


2.

- 84.5% 2,375 가 ,
- (83.3%) 72% .

- 63.5% , 가 가 49.3% : EU
 - ()

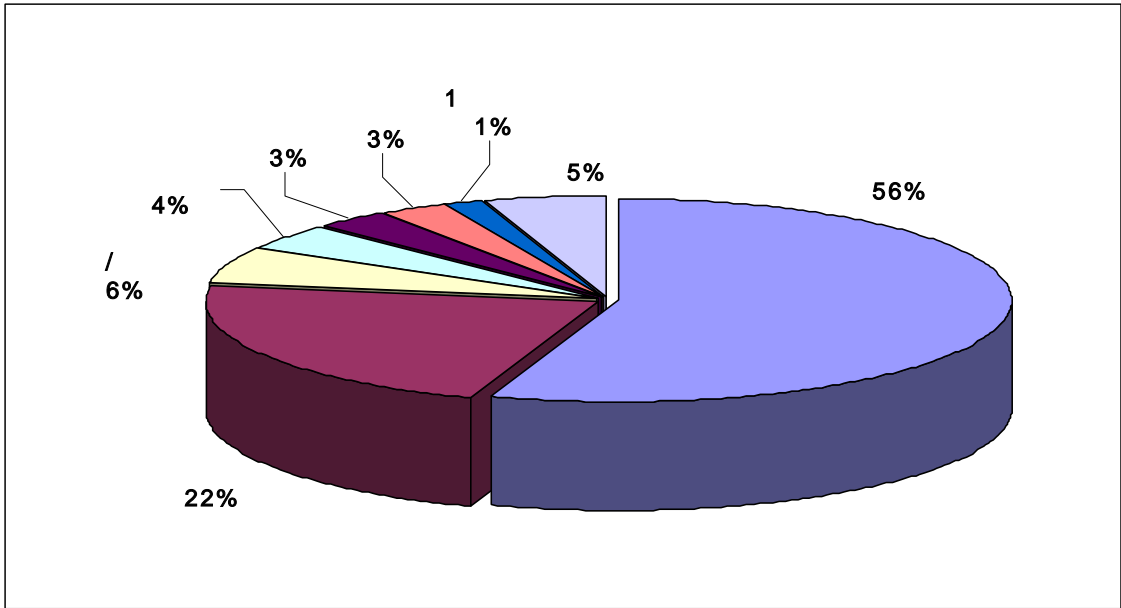
< >



3.

- 3,659 , 56% 22%
 - 가가 4%, 3%

< >



4.

-

25.1% 31.3% 가, 45%, 33%

-

, , CIS

-

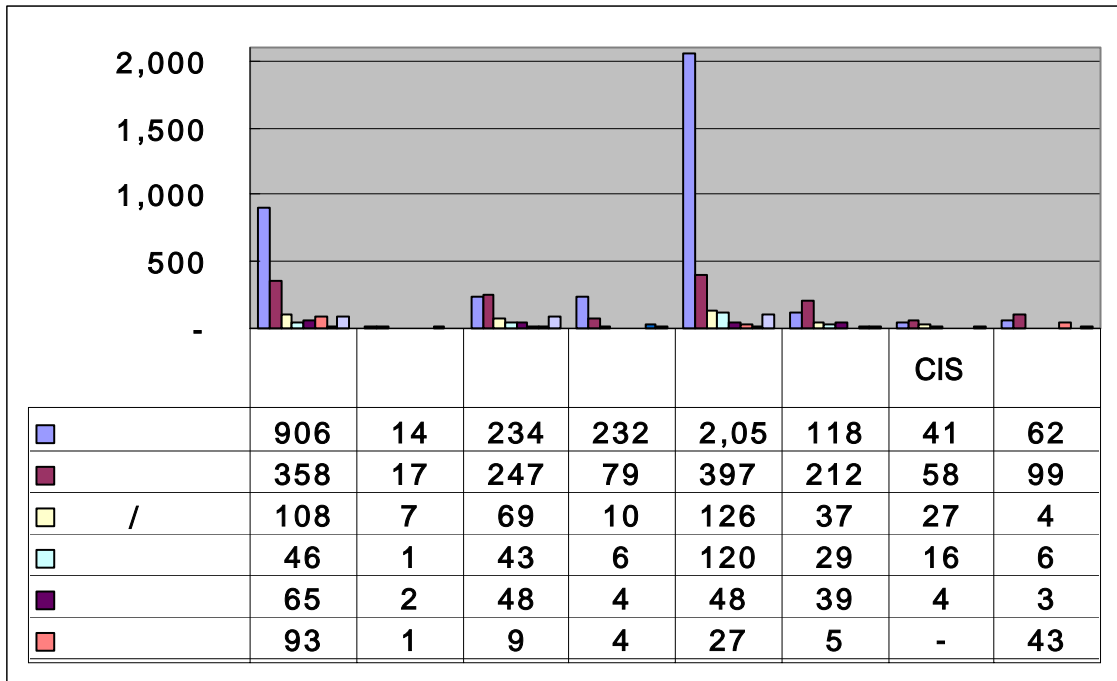
71.2% 53.6%

-

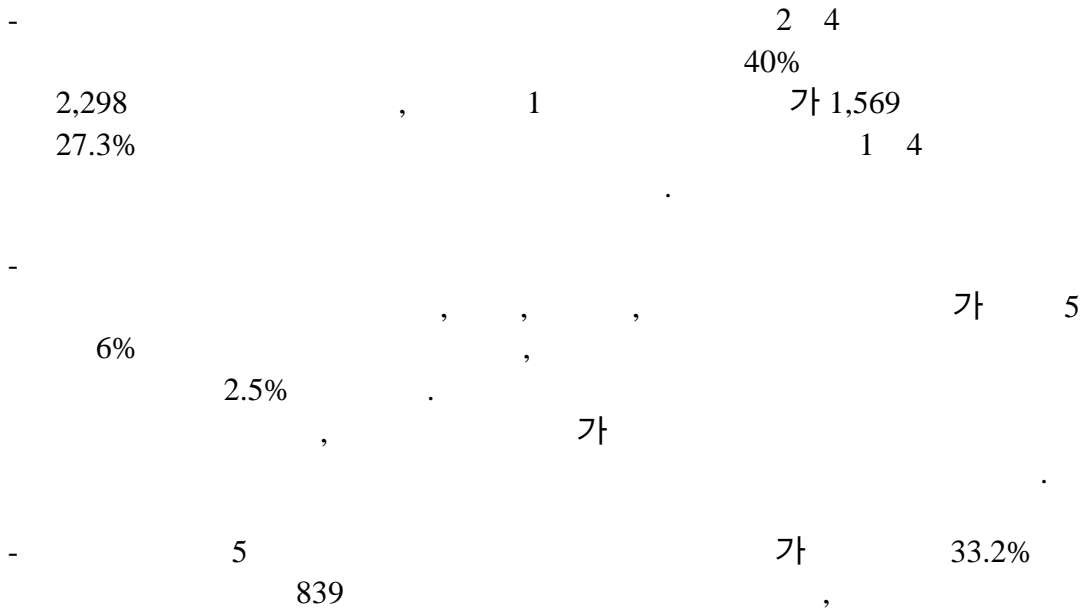
21.4% 가 , 62.9% NAFTA

, 가

< >

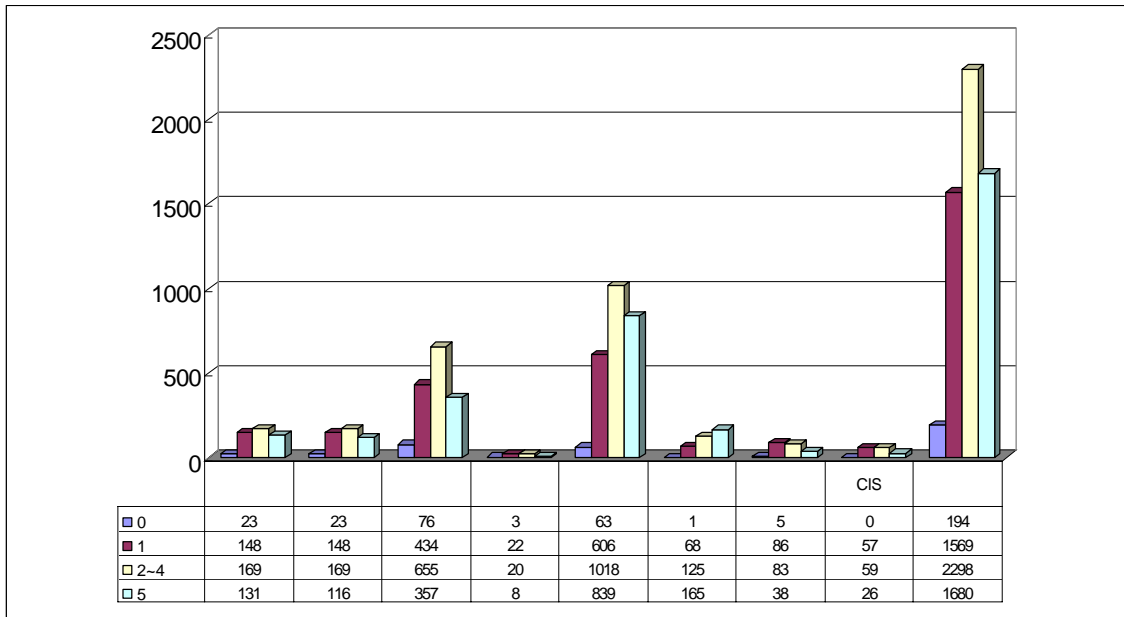


5.

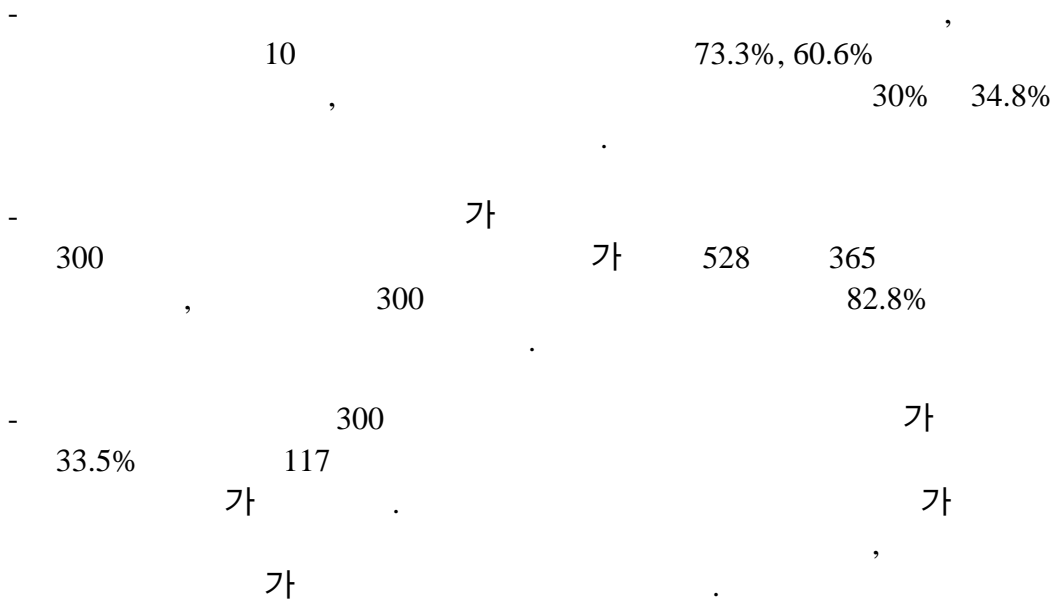


<

>

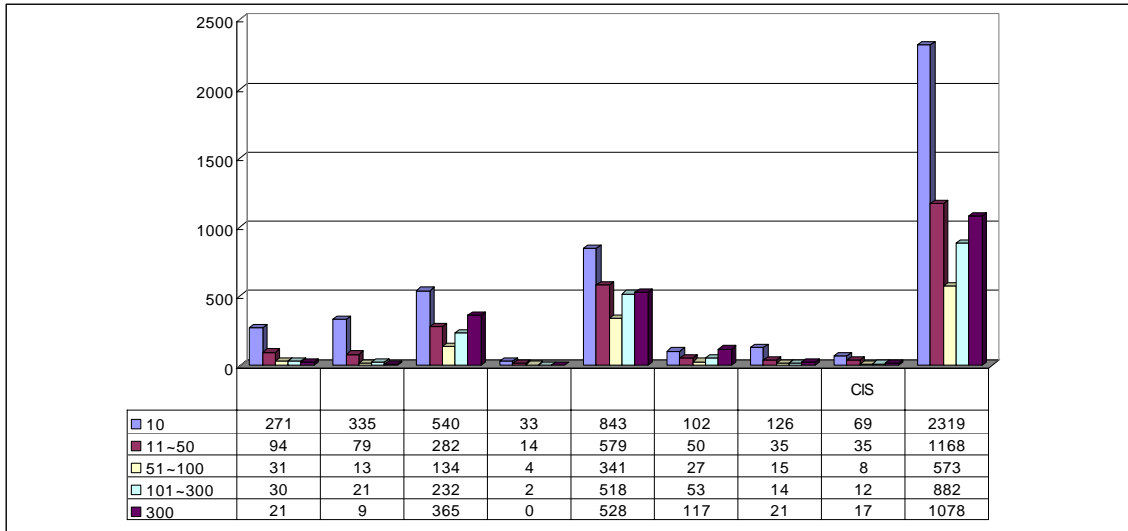


6.



<

>



III.

1.

- 64.9% 1,733 가

- 90% 17.2% 10.3%

- 02 가 가 가 가

- 가 IT

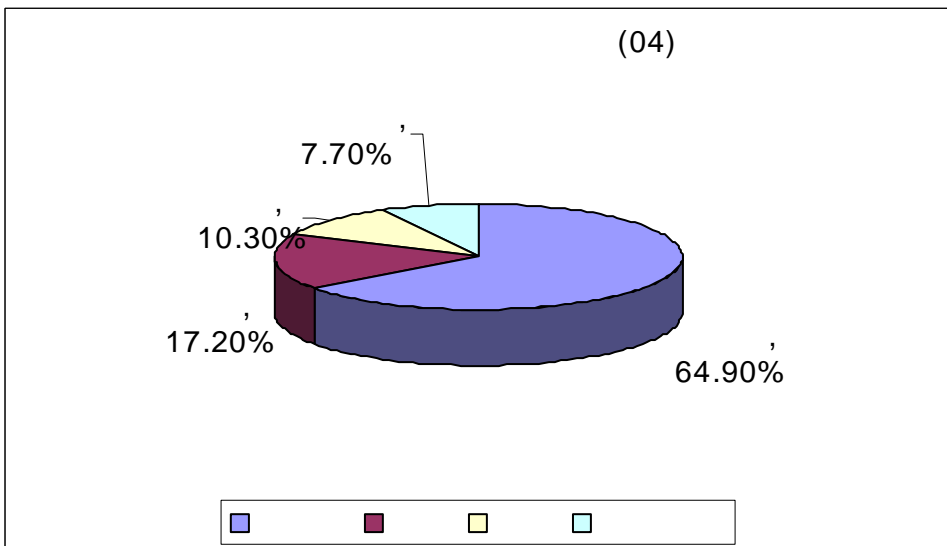
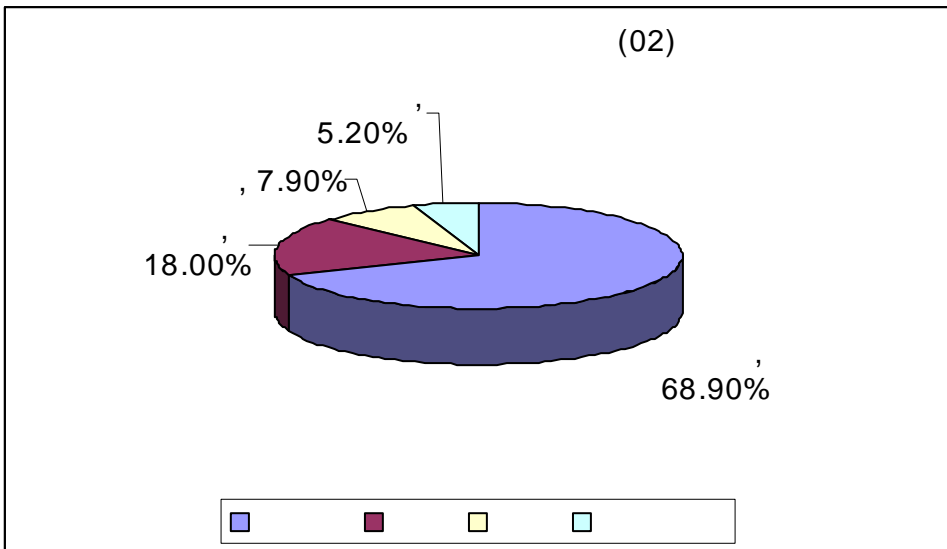
- 가 , CEPA

가 가

가

가

< >

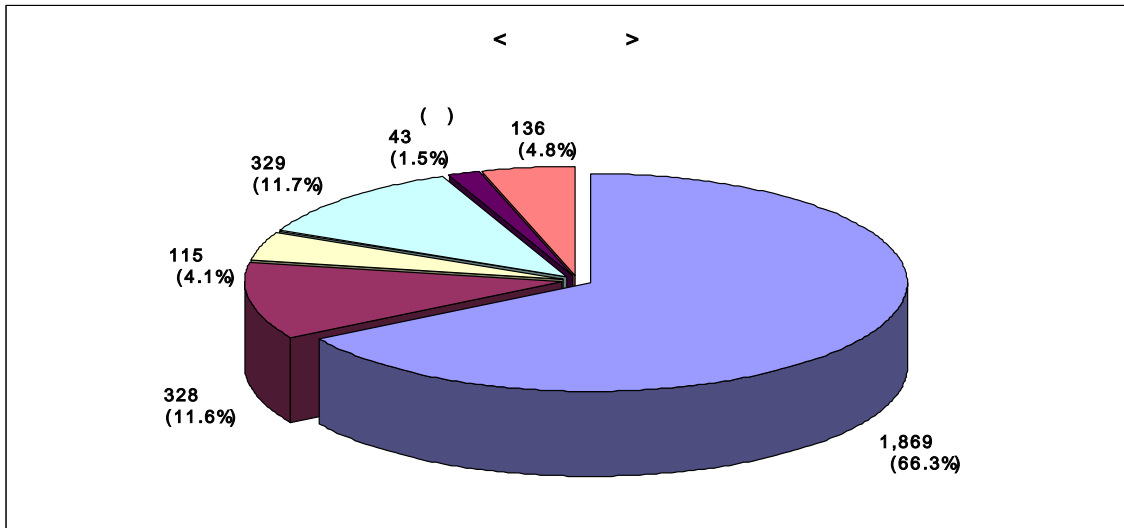


:
- : , , , , ,
- : , , , , ,

- : ,
 - : (,)

2.

- 가
 82% , .
 - 80.8% .
 .
 - 非 11.7%
 1.6% , 가 가
 가 .
 < >



3.

- 가 92 97 98 99 .

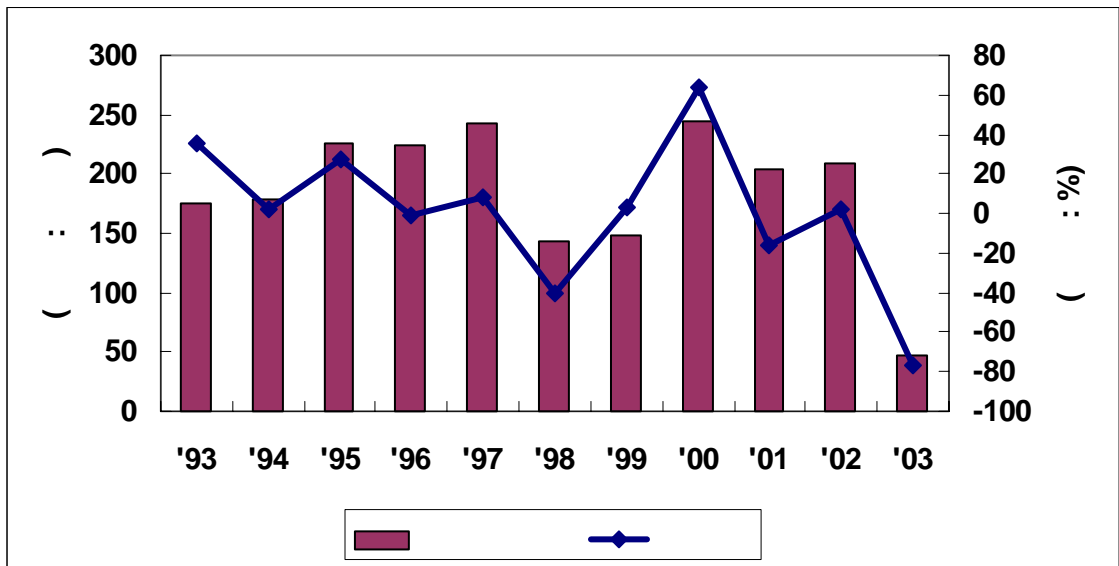
- 2000 .

- 2000 200

- 2003 가 가 , 19.4% 가

1,592 '03 가 250

< >



() , 가

: 1,692	
가	
	78
	52
	82
	310
-	107
-	203

: 2,888	
-	48
-	94
-	244
-	7
-	63
-	31

	76
가	73
	53
-	13
-	40
	408
	242
-	6
-	169
-	57
-	10
	16
	110
	8
	184

-	222
-	15
-	887
-	272
-	6
-	250
-	93
-	5
-	336
-	38
-	12
-	28
-	161
-	22
	54

: 53	
가	
	15
	38
-	9
-	29

: 471	
가	
	12
	39
	4
	5
	92
-	8
-	9
-	63
-	12
	12
가	10
	4
	7
	31
	2
	1
	6
	81
	6
	17
	14
	7
	16
	4
	32

: 748	
가	
	698
-	4
-	3
-	2
-	139
-	39
-	1
-	4
-	1
-	1
-	32
-	1
-	16
-	3
-	2
-	1
-	12
-	8
-	5

-	27
- D.C.	6
-	2
-	2
-	41
-	15
-	1
- ()	230
- ()	54
-	1
-	2
-	1
-	27
-	1
-	14
	50
-	9
-	41

: 369	
가	
	80
	29
	131
	2
	31
	12
	3
	12
	21
	6
	11
	31

	25
	2
가	30

CIS : 166	
가	
	94
-	2
-	44
-	48
	38
	10
	24

. : 236	
가	
	36
	17
	2
	9
	4
	19
	51
	5
	6
	9
	15
	15
	9
	18
	16
	5